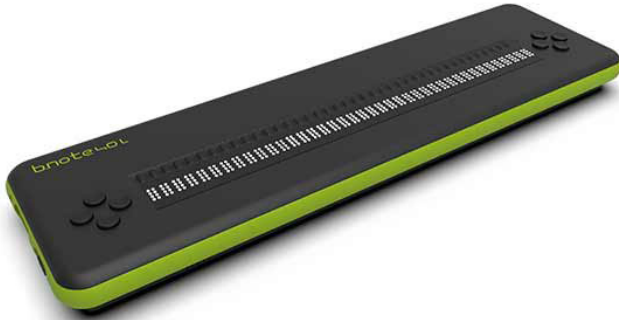


BRAILLE DISPLAY **B.NOTE 40**

Available in different versions, the **b.note 40 braille display** by Eurobraille meets the needs of **braille readers** seeking **autonomy** and **simplicity**.

Also discover **b.view**, the **free application** that allows **sighted companions** to view the **braille display** of a **b.note** on a screen.



Sleek and efficient, the different versions of the b.note 40 expand the "Made in France" b.note range designed for blind users, which is already generating a lot of buzz.

DESCRIPTION

The **b.note 40** are **easy-to-use braille displays** available in several versions.

No need to move your hands to find the advance or back buttons — the **two-position routing cursors** on the b.note make reading easier.

A **protective bumper** safeguards the b.note, and a **zippered carrying case** is included.

Available in multiple versions to better suit your needs:

- **b.note standard**: 40 cells, USB and Bluetooth connection, document reader (docx, odt, pdf, epub, xlsx, txt), Perkins keyboard.
- **b.note basic**: 40 cells, USB connection, Perkins keyboard.
- **b.note light**: 40 cells, USB and Bluetooth connection, document reader (docx, odt, pdf, epub, xlsx, txt), no Perkins keyboard.
- **b.note basic/light**: 40 cells, USB connection, no Perkins keyboard.

NEW DESIGN FOR A FLAWLESS DISPLAY

Thanks to its various USB and Bluetooth ports, the **b.note 40** helps you control your PC, tablet or smartphone and browse your apps. **The Bluetooth function** also enables file transfer and reading (DOCX, ODT, PDF) with Android devices and vice versa. Its carefully crafted **ergonomics** offer optimal reading and web browsing conditions, compatible with all **screen readers**. Moreover, its **sleek and modern design**, combined with **durable materials**, ensures unmatched longevity.

KEY FEATURES

- **Compatible with all screen readers.**
- **File download support** for DOCX, ODT, and PDF.
- **Advance/back display navigation** with routing cursor.

BOOST YOUR SPEED AND EFFICIENCY — WITH OR WITHOUT YOUR FINGERS

As with the braille keyboard version, the built-in headphone jack lets you rest your fingers and enjoy **speech output**.

To simplify navigation, the **two-position routing cursors** help you move backward or forward across the display. **Customizable navigation keys** for left- and right-handed users remain available.

	usb-c	Braille keyboard	usb	Bluetooth/wifi	internal functions
40 standard	yes	yes	yes	yes	yes
40 light	yes	no	yes	yes	yes
40 basic	yes	yes	no	no	no
40 basic/light	yes	no	no	no	no

FEATURES

TECHNICAL SPECIFICATIONS

- **Display:** 40 braille cells / 40 routing cursors (only on standard and basic versions)
- **Braille cells:** 8-dot per cell

- **Braille keyboard:** 10 keys
- **Keypads:** 2 sets of 4 keys
- **Processors:** STM32L1 / ARM Cortex-A53, quad core, 1.4GHz
- **RAM:** 512MB LPDDR2 (900MHz)
- **SD Card:** 64GB (not included in basic and basic/light versions)
- **Wi-Fi:** 2.4GHz 802.11ac dual band (not available on basic and basic/light)
- **Bluetooth:** 4.2 LS BLE (not available on basic and basic/light)
- **Audio out:** 3.5mm jack (not available on basic)
- **Battery:** 3.7V 6000mAh (22.2 W)
- **Fast charging:** via USB-C power adapter (Universal PD 2.0 protocol)
- **Charging time:** 30% in 25 min., 80% in 1h30
- **Battery life:** over 14 hours
- **Dimensions:** 365 mm (40 cells) x 105 mm x 27 mm
- **Weight:** 600 g
- **Included accessories:** protective case, power supply block, USB-C/USB-C cable, USB/USB-C cable

AVAILABLE LANGUAGES

French, English, Italian, Dutch, Norwegian, Swedish, Slovenian, Czech, Hebrew

INTERNAL FUNCTIONS OF B.NOTE (EXCEPT BASIC AND BASIC/LIGHT)

- **File manager** with Bluetooth transfer
- **Document support:** .odt, .docx, .pdf, .brf, .txt, .epub
- **Text reading:** via speech synthesis or contracted braille
- **Editing tools:** cut / copy / paste, undo / redo
- **Bookmarks**
- **Audio player:** mp3, wma...
- **Podcast and web radio player**
- **Agenda**
- **EOLE library reader**
- **Direct Wikipedia access**
- **Braille learning mode:** reading and input of words or calculations
- **Games:** Minesweeper, Mastermind

COMPATIBILITY

- **Bluetooth connection:** up to 4 devices (not available on basic and basic/light)
- **Screen readers:** JAWS & NVDA
- **File formats:** DOCX, ODT, PDF, TXT & MBE (except basic and basic/light)

OPTIONS

- **Educational software:** esysuite

- **Extended warranty**

WARRANTY

2 years

ADD-ONS AND DOWNLOADS

GUIDES, MANUALS AND SOFTWARE